

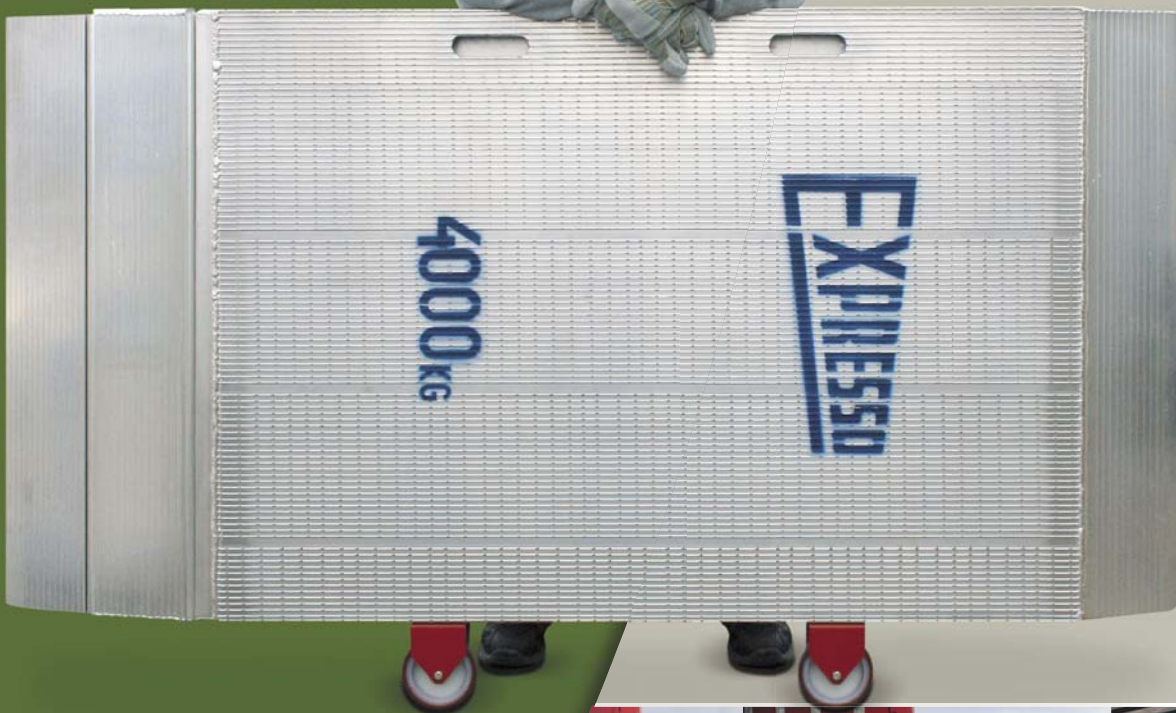


Simple bridging

with loading aids from experts for experts



THE [ORIGINAL]



Small Goods Handling Specialists

Simple bridging of gaps

The demands for reliability and flexibility expected from delivery companies are increasing continuously. Short loading/unloading times with no waiting periods for vehicle drivers are essential to give a company that competitive edge. EXPRESSO's aluminium dock plates & dock boards provide individual and application-oriented solutions for optimized logistic procedures Reason: Even a narrow gap can make a loading/unloading procedure impossible.

Aluminium – our preferred material is light and strong

The aluminium alloy used by EXPRESSO is 50% lighter than steel, but just as strong. This results in an enormous relief for personnel when working with and handling our dock plates and dock boards. Our special aluminium alloy is the best guarantee for a long working life and features outstanding corrosion resistance.

High-grade treadplate surfaces

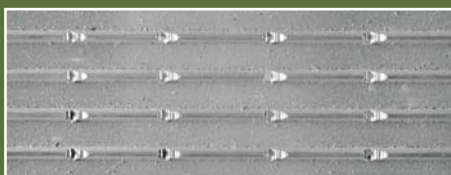
The surfaces of our aluminium dock plates & dock boards ensure non-slip traversing in unfavourable weather conditions. Whether five-bar, cross-grooved or cross-grooved 'Plus', all available treadplate surface options meet the highest quality standards, and offer increased safety and mobility.



Five-bar studded profile



Cross-grooved profile



Cross-grooved 'plus' profile

Answering the following questions is important for selecting the perfect solution for your loading task:

- What weight must the plate/board be able to support?
- How will the plate/board be loaded? – e.g. fork-lift truck, pallet truck, hand truck?
- What is the height difference, e.g. between loading ramp and truck?
- What distance must be bridged?

Whatever the question, EXPRESSO has the answer.

Our profiled guide rails

For attaching the various types of dock-edge levellers and spring-loaded dock boards, we provide two guide rail versions. Which guide rail is required for your selected loading aid is stated on the respective page at the bottom of the versions table. Should you have any questions, simply ask us.



Type 6038860, hot-galvanized guide rail with closed top for welding to the dock edge; the corresponding dock levellers – with or without counterbalancing springs – are fitted with ball bearings for easy sliding, and are designed for particularly heavy loads and a long service life without maintenance.



Type 6016516 (for screw mounting)
Type 6016515 (for welded mounting), hot-galvanized guide rail with closed top for bolting or welding to the dock edge – the dock levellers slide sideways smoothly and are fitted with safety catches as standard

Foldable loading ramps

Mobile and foldable

Drivers who do not have a hydraulic tail-lift on their vehicle, do not have to struggle anymore, because EXPRESSO's mobile and/or folding dock plates with cross-grooved treadplates are ideal vehicle companions. Type 8 772 26 comes with two solid rubber wheels and two hand-friendly plastic grips as standard. Also for Type 8 772 20 we recommend the optional wheel set Type 1067 for ergonomic transport and handling of the loading aid.



Type 8 772 20



Type 8 772 26



Roll to the site, unfold, put in position, and load/unload.



Divided and foldable

These dock plates with cross-grooved treadplates can be stored conveniently and compactly in the van or truck, and are immediately available for loading/unloading. This lets the drivers work independently, enabling them to decide freely when and how to load/unload. This version is fitted with 2 x 2 hand-friendly plastic grips as standard, enabling the dock plate to be positioned easily and quickly.



Type 8 772 44



Put in position...



... connect...



...load/unload. Done!

Type	Load capacity kg	Length mm	Width mm	max. Height difference mm	Handles	Weight kg
8 772 20	400	2.000	800	600	2	32
8 772 26	240	2.600	800	750	2	40
8 772 44	300	2.000	2 x 400	600	4	2 x 16

Type 1067, solid rubber wheel

Light dock plates

Lightweight and practical

These light, mobile dock plates can be transported conveniently in delivery vehicles, or be stored in the goods inwards area. With their non-slip, five-bar studded treadplates, these aluminium dock plates only require minimum storage space, because instead of protruding handles, they are fitted with handhold cutouts. The angled roll-on/roll-off plates ensure smooth traversing with loaded transport equipment.



Type F 8762



The full-width stop flange ensures optimum positioning of the dock plate for increased safety.



What's more, dock plates are also able to level out height differences perfectly, e.g. between the tail lift and pavement or steps.



Type F 8760

Type	Load capacity kg	Length mm	Width mm	max. Height difference mm	Weight kg
F 8760	600	800	1.000	150	17
F 8762	600	1.000	800	170	17
F 8761	1.000	800	1.000	150	18
F 8763	1.000	1.000	800	170	18
F 8769	1.000	1.000	1.000	170	21
F 8770	1.000	1.200	1.000	220	26
F 8764	1.000	1.500	800	280	30
F 8781	1.500	800	1.250	150	25
F 8783	1.500	1.000	1.250	170	30
F 8790	1.500	1.200	1.250	220	39
F 8784	1.500	1.500	1.250	280	47

Variable dock boards

Small and robust

The outstanding features of these dock boards are low weight and high capacity loads, enabling them to be traversed safely with loads up to 4000 kg. They occupy minimum storage space in the goods inwards area, and can bridge height differences up to 100 mm. Depending on version, the dock boards are fitted with a central or full-width stop flange underneath. The flange ensured precise and safe docking.



Type F 8773/15R

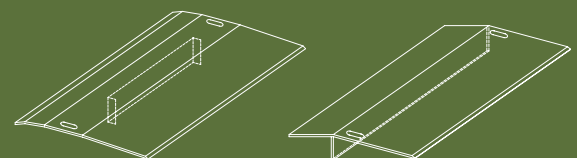


Type F 8773/15R



Type F 8771/15

Type	Load capacity kg	Length mm	Width mm	max. Height difference mm	Weight kg
F 8771/10	2.000	500	1.000	100	12
F 8771/12	2.000	500	1.250	100	15
F 8771/15	2.000	500	1.500	100	19
F 8771/20	2.000	500	2.000	100	24
F 8771/15R	4.000	500	1.500	100	30
F 8771/20R	4.000	500	2.000	100	39
F 8773/10	2.000	700	1.000	100	16
F 8773/15	2.000	700	1.500	100	25
F 8773/17	2.000	700	1.750	100	29
F 8773/20	2.000	700	2.000	100	33
F 8773/15R	4.000	700	1.500	100	36
F 8773/17R	4.000	700	1.750	100	42
F 8773/20R	4.000	700	2.000	100	48



Versions with a length of 700 mm have a central stop flange, whilst the 500 mm versions come with a full-width flange.

Portable dock plates

Flexible und mobile

Thanks to the high strength of these portable aluminium dock plates, loading/unloading of goods up to 4000 kg from delivery vans and on loading ramps is an efficient and easy operation. Due to the standard wheels, the dock plate can be handled and positioned conveniently by a single person. Hereby, the unique dual-hinged roll-on plate levels out uneven surfaces, and the rubber profile underneath prevents the dock plate from slipping. Depending on version, height differences up to 1200 mm can be traversed without problems. As an alternative to the handhold cutouts, we also offer welded-on aluminium grips.



Drive up...



... put in position...



... load/unload. Done!



Type F 2010

Type	Load capacity kg	Length mm	Width mm	max. Height difference mm	Weight kg
F 2007	4.000	2.000	750	600	46
F 2010	4.000	2.000	1.000	600	61
F 2507	3.400	2.500	750	750	57
F 2510	3.400	2.500	1.000	750	75
F 3007	2.700	3.000	750	900	68
F 3010	2.700	3.000	1.000	900	89
F 3507	2.300	3.500	750	1.050	79
F 3510	2.300	3.500	1.000	1.050	104
F 4007	1.900	4.000	750	1.200	90
F 4010	1.900	4.000	1.000	1.200	118

Other lengths available on request.

Available with side curbs **Type 9019006** on request (for a surcharge)

Portable dock boards

The all-rounders

These dock boards are used wherever goods need to be loaded/unloaded from different vehicle types (different loading heights). Whether loading/unloading trucks, vans or rail wagons (also from the side). These perfectly adaptable dock boards are able to bridge height differences up to 90 mm. Moreover, due to the angled roll-on & roll-off plates, these versions can be traversed with large transport devices, thus ensuring short turnaround times. For convenient handling at the loading site, the dock boards are fitted with a wheel and handhold cutout. Stop flanges provide assistance when positioning the dock board. Optional, retractable pockets for forklift prongs permit fast transport to the loading site, and as an alternative to the standard handhold cutouts, we also offer welded-on aluminium grips.



Type F 7205 1



The dock boards are always located securely: Stop flanges underneath provide assistance during positioning and prevent the boards from sliding.



Dock boards should not be used at angles of more than 12,5% (approx. 7°).

Accessory Type F 9019002, optional forklift pockets

Type	Load capacity kg	Length mm	Width mm	max. Height difference mm	Bridging distance mm	Weight kg
F 720501	4.000	520	1.500	± 70	190 – 290	29
F 720502	4.000	520	1.750	± 70	190 – 290	34
F 720503	4.000	520	2.000	± 70	190 – 290	39
F 721001	4.000	590	1.500	± 80	260 – 360	32
F 721002	4.000	590	1.750	± 80	260 – 360	37
F 721003	4.000	590	2.000	± 80	260 – 360	43
F 721501	4.000	690	1.500	± 90	360 – 460	34
F 721502	4.000	690	1.750	± 90	360 – 460	41
F 721503	4.000	690	2.000	± 90	360 – 460	47



Thanks to the handhold cutout and the solid rubber wheel, manoeuvring of the dock board is particularly easy.

Mobile dock boards

Convenient and safe

Additional convenience is provided by mobile dock boards with the unique, dual-hinged roll-on plate. Unevennesses e.g. on ramps are levelled out perfectly, greatly simplifying the use of loaded transport equipment with weights up to 5000 kg. Depending on version, height differences up to 240 mm can be traversed without problems. Another feature is the rubber profile at the supporting edge of the dock board, which prevents slipping and reduces noise. The board can be handled by a single person, and the handhold cutouts and two solid rubber wheels permit the board to be moved easily the loading/unloading location. Moreover, when not in use it can be stored upright to save space. Optional, retractable pockets for forklift prongs permit fast transport to the loading site, and as an alternative to the standard handhold cutouts, we also offer welded-on aluminium grips.



Roll to the site...



... position it ...



... load/unload. Done!



Type F 7005



Rubber profile



Accessory Type F 9019002, optional forklift prong pockets

Type	Load capacity kg	Length mm	Width mm	max. Height difference mm	Weight kg
F 7005	5.000	1.300	1.250	0 – 160	52
F 7010	5.000	1.300	1.500	0 – 160	62
F 7025	4.800	1.560	1.250	0 – 190	61
F 7030	4.800	1.560	1.500	0 – 190	72
F 7035	4.600	1.760	1.250	0 – 220	67
F 7040	4.600	1.760	1.500	0 – 220	79
F 7045	4.400	1.960	1.250	0 – 240	73
F 7050	4.400	1.960	1.500	0 – 240	86

Dock boards should not be used at angles of more than 12,5% (approx. 7°).

Portable dock boards

Professional and ergonomic

By means of the wheeled and lacquered steel (optionally galvanized) operating handle or lever frame, which is included in delivery, these large dock boards for flexible application are handled easily and can be positioned precisely by a single person. This dock board is the ideal solution in cases where there is no permanently installed loading/unloading aid, and flexibility must be ensured. Ergonomic handling is further enhanced by the unique, dual-hinged roll-on plate, which ensures smooth loading/unloading operations, because it adapts perfectly to the ramp and compensates unevennesses. In addition, the dock board is fitted with a rubber profile underneath, which prevents slipping and reduces noise. Optional, recessed forklift prong pockets for Types F 1515 to F 2020 permit fast transport to the loading/unloading site.



rubber profile

Type F 1520

Type	Load capacity kg	Length mm	Width mm	max. Height difference mm	Weight kg
F 1515	4.500	1.500	1.500	0 – 190	91
F 1517	4.700	1.500	1.750	0 – 190	104
F 1520	5.000	1.500	2.000	0 – 190	117
F 2015	4.000	2.000	1.500	0 – 250	115
F 2017	4.200	2.000	1.750	0 – 250	132
F 2020	4.500	2.000	2.000	0 – 250	149
F 2515	3.500	2.500	1.500	0 – 310	139
F 2517	3.700	2.500	1.750	0 – 310	160
F 2520	4.000	2.500	2.000	0 – 310	181
F 3015	3.000	3.000	1.500	0 – 370	163
F 3017	3.200	3.000	1.750	0 – 370	188
F 3020	3.500	3.000	2.000	0 – 370	213
F 3515	2.500	3.500	1.500	0 – 430	187
F 3517	2.700	3.500	1.750	0 – 430	216
F 3520	3.000	3.500	2.000	0 – 430	245

Available with side curbs **Type F 9019006** on request (for a surcharge)



Position it ...



... remove the operating handle...



... load/unload. Done!

Dock boards should not be used at angles of more than 12,5% (approx. 7°).

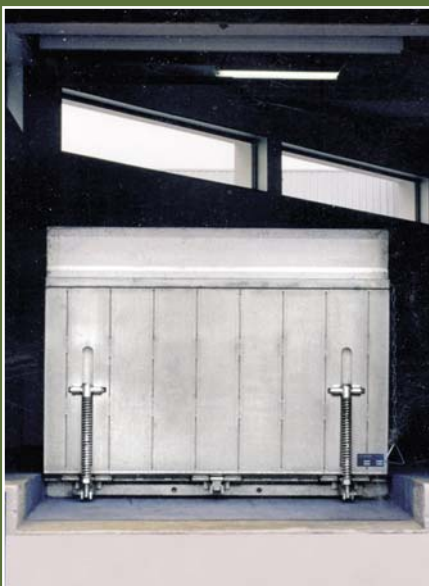
10 Spring-loaded, stationary dock levellers

Classical fixed mounting

These classical spring-loaded dock levellers are mounted in fixed guide rails (see page 2), and are used wherever regular loading/unloading operations are carried out at specific locations. The dock levellers can support loads up to 5000 kg. Angled roll-on/roll-off plates ensure smooth traversing. The levellers are lowered by means of a chain with a handle. When not in use, the leveller is raised to the parking position, where it is secured in the upright position by a spring mechanism. The mechanism is released manually. The classic solution for dock-edge levelling.



Type F 8862/1115



Dock boards should not be used at angles of more than 12,5% (approx. 7°).

Type	Load capacity kg	Length mm	Width mm	max. Height difference mm	Weight kg
F 8862/1115	5.000	1.150	1.500	± 140	57
F 8862/1117	5.000	1.150	1.750	± 140	66
F 8862/1120	5.000	1.150	2.000	± 140	75
F 8862/1315	5.000	1.300	1.500	± 160	63
F 8862/1317	5.000	1.300	1.750	± 160	73
F 8862/1320	5.000	1.300	2.000	± 160	83
F 8862/1515	5.000	1.500	1.500	± 190	71
F 8862/1517	5.000	1.500	1.750	± 190	82
F 8862/1520	5.000	1.500	2.000	± 190	94
F 8862/1715	5.000	1.750	1.500	± 215	81
F 8862/1717	5.000	1.750	1.750	± 215	94
F 8862/1720	5.000	1.750	2.000	± 215	108
F 8862/2015	5.000	2.000	1.500	± 250	91
F 8862/2017	5.000	2.000	1.750	± 250	106
F 8862/2020	5.000	2.000	2.000	± 250	120

Guide-rail Type F 6038860

Spring-loaded, movable dock levellers

Robust and movable

Mounted in fixed guide rails (see page 2), these spring-loaded dock levellers are suitable for loads up to 5000 kg, and are fitted with precision ball bearings so that one person can slide them sideways to the required position without effort. Mounting a guide rail along the full length of the loading ramp permits trucks and vans to be unloaded/loaded anywhere, without them having to back up to an exact position. The levellers are lowered and raised to the parked position by means of a chain with handle. A spring mechanism secures the leveller in the upright position. The mechanism is released manually. For safety reasons, it is not possible to move the levellers in the lowered (working) position. Angled roll-on/roll-off plates ensure smooth traversing. A professional levelling solution that offers utmost flexibility.



Type	Load capacity kg	Length mm	Width mm	max. Height difference mm	Weight kg
F 8861/1115	5.000	1.150	1.500	± 140	57
F 8861/1117	5.000	1.150	1.750	± 140	66
F 8861/1120	5.000	1.150	2.000	± 140	75
F 8861/1315	5.000	1.300	1.500	± 160	63
F 8861/1317	5.000	1.300	1.750	± 160	73
F 8861/1320	5.000	1.300	2.000	± 160	83
F 8861/1515	5.000	1.500	1.500	± 190	71
F 8861/1517	5.000	1.500	1.750	± 190	82
F 8861/1520	5.000	1.500	2.000	± 190	94
F 8861/1715	5.000	1.750	1.500	± 215	81
F 8861/1717	5.000	1.750	1.750	± 215	94
F 8861/1720	5.000	1.750	2.000	± 215	108
F 8861/2015	5.000	2.000	1.500	± 250	91
F 8861/2017	5.000	2.000	1.750	± 250	106
F 8861/2020	5.000	2.000	2.000	± 250	120

Guide-rail **Type F 6038860**

Dock boards should not be used at angles of more than 12,5% (approx. 7°).



From the parked position...



... the leveller is lowered...



... load/unload. Done!

Sliding dock levellers

Rugged and mobile

With a load capacity up to 4000 kg, this simple sliding dock leveller is an alternative to the spring-loaded versions. It slides in a guide rail (see page 2) that is screwed or welded to the ramp. This saves time, because trucks simply back up to the ramp without exact positioning. In its vertical parking position, the leveller is secured automatically. It is released and lowered by means of an operating handle. In this way, a single person can handle loading/unloading operations.



Slide to the required position...



... by means of the guide-rail...



... lower. Done!



Type F 6515

Type	Load capacity kg	Length mm	Width mm	max. Height difference mm	Weight kg
F 6515	4.000	650	1.500	± 90	34
F 6517	4.000	650	1.750	± 90	40
F 6520	4.000	650	2.000	± 90	46
F 7515	4.000	750	1.500	± 100	38
F 7517	4.000	750	1.750	± 100	45
F 7520	4.000	750	2.000	± 100	51
F 9515	4.000	950	1.500	± 125	46
F 9517	4.000	950	1.750	± 125	54
F 9520	4.000	950	2.000	± 125	62

Guide-rail Type F 6016516 or Type F 6016515 (see page 2)

Dock boards should not be used at angles of more than 12,5% (approx. 7°).

Sliding dock levellers

Safe and flexible use

Wherever relatively small differences in height between truck and ramp must be compensated, these levellers are the perfect answer. Three sliding hinges mounted in ball bearings make these dock levellers unbeatable in terms of application flexibility. Provided the wear-resistant, long-life guide rail (see page 2) has been fitted along the full length of the ramp, the leveller can be moved easily and positioned precisely in the loading/unloading position. Truck manoeuvring is simpler, which ensures less time for operations at the ramp. All versions are fitted with an automatic latch that secures the leveller in the upright position, with controlled release by means of a foot-operated pedal. For safety reasons, it is not possible to move the levellers in the lowered (working) position. An operating lever is used to lower and position the leveller easily and ergonomically.



Type F 8860/6515

Type	Load capacity kg	Length mm	Width mm	max. Height difference mm	Weight kg
F 8860/6515	4.000	650	1.500	± 90	46
F 8860/6517	4.500	650	1.750	± 90	52
F 8860/6520	5.000	650	2.000	± 90	58
F 8860/7515	4.000	750	1.500	± 100	50
F 8860/7517	4.500	750	1.750	± 100	57
F 8860/7520	5.000	750	2.000	± 100	63
F 8860/9515	4.000	950	1.500	± 125	58
F 8860/9517	4.500	950	1.750	± 125	66
F 8860/9520	5.000	950	2.000	± 125	74

Guide-rail Type F 6038860

Dock boards should not be used at angles of more than 12,5% (approx. 7°).



Insert the operating lever...



... release the catch with the foot pedal...



... load/unload. Done!

Optional docking aids

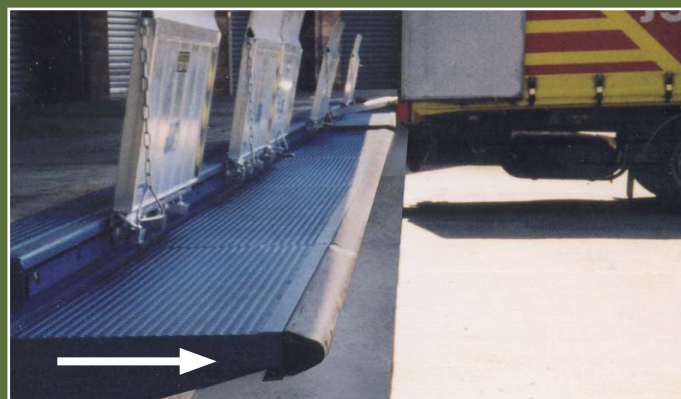
Top priority for safety!

It only takes a small but ingenious detail to provide an extra plus in efficiency and/or safety. In order to make loading/unloading operations even more efficient, but primarily safer, we offer a range of useful docking aids and accessories.



Type F 6016500 (650 mm), **Type F 6017500** (750 mm),
Type F 6019500 (950 mm) – per meter

This compact docking aid consists of three practical safety components: A front-mounted safety buffer with rubber profile to protect the van, an integrated guide rail Type F 6016516 (see page 2) for sliding dock levellers (see page 12), and a fixing bracket (on request) for perfect mounting to the ramp.



Type F 6026500 (650 mm), **Type F 6027500** (750 mm),
Type F 6029500 (950 mm) – per meter

This docking aid consists of a full-length guide rail Type 6038860 (see page 2) for sliding dock levellers (see page 13), and an equally full-length buffer with wear-resistant rubber profile to provide backing-up protection along the entire width of the ramp. What's more, this docking aid is not only suitable for the construction of new ramps – it can be retrofitted easily for full-width protection of loading/unloading operations on the ramp. In addition, truck manoeuvring is speeded up for improved efficiency.



Type F 6036500 (650 mm), **Type F 6037500** (750 mm),
Type F 6039500 (950 mm) – Width 2,50 m

The compact construction of this docking aid is an all-in-one solution. The buffer includes a guide rail Type F 6038860 (see page 2) for mounting the spring-loaded dock levellers Type F 8860/... whereby the bumper has ribs that help prevent damage to the trucks.



Type F 9010 (in pairs)

Bumpers with wear-resistant rubber protection provide a simple but perfect solution. They can be fitted to all ramps that do not have a projecting edge, and assist truck drivers during backing-up to the ramp for increased safety.



Optional docking aids

Height-variable, signal red docking aids

They provide ideal assistance for truck drivers during backing-up to the ramp, and reduce the risk of damage. Moreover, this solution gives additional safety for trucks whose bumpers are higher than the ramp, as they ensure precise docking. Vertical ribs inside the bumpers act as shock absorbers, thus protecting the transport vehicles from damage. During loading/unloading, the spring-loaded docking aids move up/down. Optionally, galvanized versions are available instead of signal red.



Type F 9019012
(per bumper),
lacquered finish,
mounted at ramp
height



Type F 9019010
(per bumper),
lacquered finish, mounted
150 mm above
ramp height

Type F 9019011
(per bumper),
lacquered finish, mounted
250 mm above
ramp height



Competence and service since 1953

More than 50 years of extra plus in ergonomomy and economy

Our range of transport and lifting equipment covers the handling gap between manual labour and the use of forklift trucks. They are used wherever individual goods, packages, and crates need to be lifted and transported. Due to their unique design and construction, EXPRESSO products are unmistakable branded articles – made in Germany. You will find them worldwide. This is assured by our sales partners in more than 25 countries.



Aluminium-
Hand-trucks

THE
ORIGINAL



Lift&Drive
battery-powered
lifting aids



Aluminium-
four-wheel carts



touch²move
Drive system

THE
[ORIGINAL]



EXPRESSO Deutschland GmbH
Antonius-Raab-Str. 19
34123 Kassel/Germany
Tel.: +49 (0) 5 61 - 95 91 0
Fax: +49 (0) 5 61- 95 91 198
E-Mail: expressoinfo@JLU.de
www.expresso.de



distributed by: