

Stainless Logitilt - when lifting and tilting hygienically

Optimum hygiene - with the stainless-semi Logitilt the risk of bacterial contamination is minimised.

The stainless-semi products are developed for environments where severe hygiene is needed on the surfaces that are in direct contact with the goods being handled, e.g. meat, fish or medicine.

The design focuses on the safety and ergonomic working conditions of the user - the Logitilt can tilt boxes and crates up to 90°. The user does not have to bend down or stretch up to reach the components in the bottom of the crate or box - this applies to both standing and sitting work positions.

The ergonomically correct handle of the Logitilt ensures the user a relaxed hold.

High quality is ensured through an extended test programme and in cooperation with experts in Health and Safety.



LOGITILT LT-TE STAINLESS-SEMI

Technical Specifications

The Logitilt can carry, lift and tilt crates and boxes up to 90°, and the working height can be varied.

The handle can be turned to the side and locked, so that the user has free access to the contents of the crate or box.

Easy to clean and optimum resistance

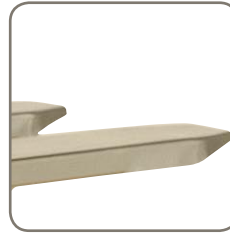
- acid-resistant, sandblasted and electric polished fork chassis
- strong surface
- corrosion resistant

Long operating life and low maintenance costs

- strong construction
- AISI316L steel used on the fork chassis



Remote control for the tilt function.



Closed forks mean easy cleaning and few hiding places for bacteria.

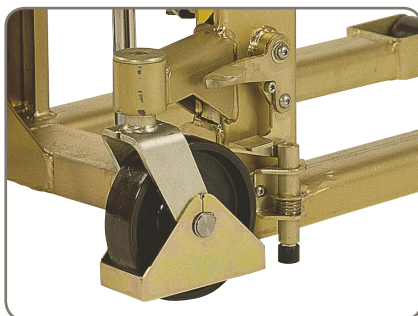


The handle can be turned to the side and locked, so that the user has free access to the contents of the crate or box.

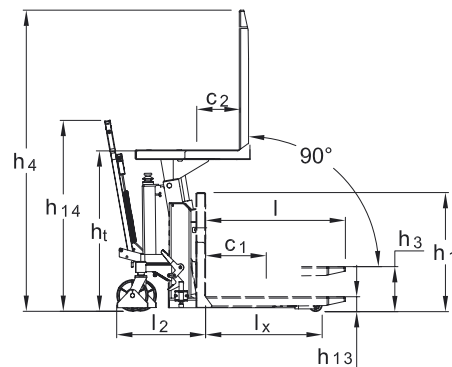
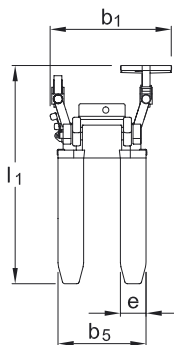
Product (measured in mm)	LT 1000TE RF-SEMI	
Capacity in kg	1000	
Height, tilted	h_t	750-950
Lifting height	h_3	285
Fork length	l	800
Overall height with handle	h_{14}	1090
Overall height	h_1	680
Overall width	b_1	780
Fork span	b_5	560
Fork width	e	163
Overall length by 800 mm forks	l_1	1410
Length without forks	l_2	590
Run-in length	l_x	665
Overall height	h_4	$h_t + l$
Lowered height	h_{13}	85
Load centre	c_1	max. $l/2$
Load centre	c_2	min. 200 - max. 420
Pump motor	0,8 KW 12V	
Lifting speed lift/tilt	4 s/14 s	
Lowering speed lift/tilt	3 s/11 s	
Weight by 800 mm forks (without battery)	176 kg	



For the food industry in which hygiene and ergonomically correct working positions are important factors.



Foot protectors, parking brake, safety valve and emergency stop offer the operator optimum safety.



Please ask for specification details or visit our website www.logitrans.com. We also offer tailor-made solutions.